

# Orienteering Festival 2012

## Bulletin 01



### Organization

Laufklub Kompass Innsbruck

[www.kompass-innsbruck.at](http://www.kompass-innsbruck.at)

Tourismusverband Wipptal

[www.wipptal.at/orienteering](http://www.wipptal.at/orienteering)

### Address

TVB Wipptal, 6150 Steinach,

im Rathaus, Austria

Tel: (+43) 5272 6270

Email: [tourismus@wipptal.at](mailto:tourismus@wipptal.at)

### Important dates

Event A: 25 june – 1 july

Training: 25 june – 28 june

Competition: 29 june – 1 july

Event B: 1 july – 8 july

Training: 2 july – 4 july

Competition: 5 july – 7 july

Entry starts: 01.11.2011

via [www.orienteingonline.net](http://www.orienteingonline.net)

Entry closes: 30.5.2012

On site entry is subject to availability.

Every entry should be confirmed

personally.

### Program

Event A/B	Day	Morning	Afternoon
24./1.	Sun	Arrival	Model Training
25./2.	Mon	Training 10 AM	Training 16 PM
26./3.	Tue	Training 10 AM	Training 16 PM
27./4.	Wen	Training 10 AM	Training 16 PM
28./5.	Thu	Model Training	E1 sprint
29./6.	Fri		E2 middel
30./7.	Sat	E3 long	Festival Party
1./8.	Sun	Model Training	Departure

Cat. Training	Classes Competition	
Short (easy/hard)	W/M 12	W/M 50
Middel (easy/hard)	W/M 14	W/M 60
Long (easy/hard)	W/M 18	W/M Open
Ultralong	W/M 19	Beginners
	W/M 40	

### Maps

from "6 Days of Tyrol 2010" and "New

Maps"; Scale 1:10 000. Equi 5 m.

Produced 2010/11 by A. Gavriljuk, R.

Slobodyanjuk & V. Kirianov

Description: open landscapes, alpine

forests, partly rocky and steep

### Timing system

Sportident. Own chips may be used. 2€

per day for rental chips.

### Entry fees in €

Age	Date	Training	Competition	Both
-18	before 31.3.	40	30	70
	after 31.3.	55	40	95
19-	before 31.3.	55	40	95
	after 31.3.	70	60	130

### Entry Fee Payment to:

TVB Wipptal  
Abteilung Incoming  
6150 Steinach, im Rathaus

Bank: Raika Wipptal  
BIC RZT1AT22329  
IBAN AT57 3632 9000 0001 6600

### Accommodation (incl. tax)

[www.wipptal.at/orienteering](http://www.wipptal.at/orienteering)

4\* Hotel half-board – 59 € pP/night  
3\* Hotel half-board – 50€ pP/night  
dorm. Jufa half-board-36 € pP/night  
dorm. half-board – 26 € pP/natt  
appartement (4 Pers.) - from 21€ pP/natt

### Children discounts:

age 0 - 2 free of charge  
age 3 - 6 50 %  
age 7 - 10 30 %

Special prices apply to group bookings.  
Please contact us for special offers and  
more information.

Email: [tourismus@wipptal.at](mailto:tourismus@wipptal.at)

Tel: +43 5272 6270

### Information

English [www.wipptal.at/orienteering](http://www.wipptal.at/orienteering)

Svenska [www.wipptal.at/orientering](http://www.wipptal.at/orientering)

### Available Extra Program

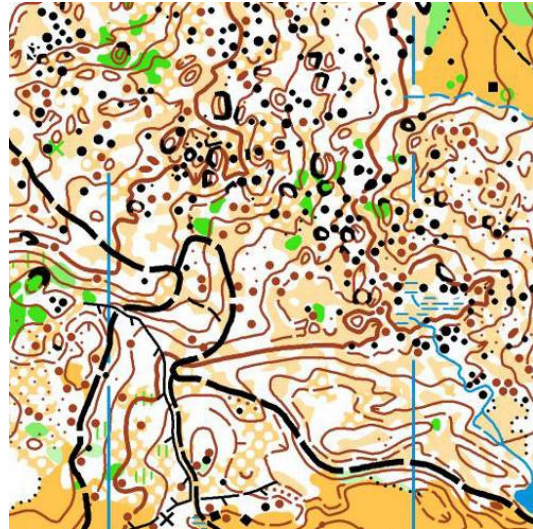
(detailed Program coming up)

Guided hikes according tourist program  
Guided mountain bike tours  
Guided alpine hut tours  
Excursion to Dolomites  
High alpine excursions to glacier  
Rafting trip  
Special children´s program

### Getting to Wipptal

#### by Bus

from Scandinavia for Events A/B  
Henrik Berg  
tel. +46 73 974 50 89  
[henrik.berg@wipptal.at](mailto:henrik.berg@wipptal.at)



#### by Air

to Innsbruck/München

[www.austrian.com](http://www.austrian.com)

[www.lufthansa.se](http://www.lufthansa.se)

[www.airberlin.se](http://www.airberlin.se)

for transfer service from airports:

email: [tourismus@wipptal.at](mailto:tourismus@wipptal.at)

telefon: +43 5272 6270

#### by Car

drive to Innsbruck in Austria/Tirol, take  
A13 towards Brenner/Brennero, take exit  
19 Maut/Steinach am Brenner, take right  
towards Steinach am Brenner on B 182,  
destination reached at tourist information  
centre in A-6150 Steinach am Brenner.

Please feel free to contact us if you need  
more information!

Email: [tourismus@wipptal.at](mailto:tourismus@wipptal.at)

Tel: +43 5272 6270

